

# Day 10: Body



Green Goddess  
[isabelpan.business@gmail.com](mailto:isabelpan.business@gmail.com)  
Rock Canyon High School

# Almay Smart Shade CC Cream: Why do I use this product?



- ❖ It is a lightweight foundation, which I can use on an everyday basis.
- ❖ It also has SPF 20, so I don't have to worry about applying sunblock to protect my skin
- ❖ It's relatively affordable and can be purchased at most major beauty retailers

# Almay Smart Shade CC Cream

- ❖ The overall hazard rating of my product is an 8!
- ❖ There were a total of 8 potentially hazardous ingredients
- ❖ Octinoxate, Tridecyl trimellitate, Polymethyl methacrylate, C13-14 Isoparaffin, Tromethamine, Laureth-7, Phenoxyethanol, and Ethylparaben

Verizon 12:01 AM 3%

Lists Product Shop

Almay  
Almay Smart Shade CC Cream 8

Like + List Review Product

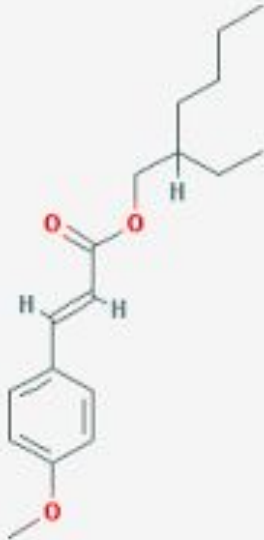
Ingredients (49) Our Picks (632) Reviews (0)

DIRTY HALF N' HALF CLEAN

OCTINOXATE 7.5%	8
TRIDECYL TRIMELLITATE	6
POLYMETHYL METHACRYLATE	6
C13-14 ISOPARAFFIN	6
TROMETHAMINE	5
LAURETH-7	5
PHENOXYETHANOL	5
ETHYLPARABEN	4

Disclaimer

# Most Toxic Ingredient: Octinoxate



- ❖ Put in cosmetics to protect against UVB radiation
- ❖ Known endocrine disruptor, which impacts estrogen activity and the thyroid gland
- ❖ Impacts development, the brain, and metabolism
- ❖ Could increase chances of developing breast cancer

# Alternative: True Botanicals Everyday Sheer Coverage SPF 20

## ❖ Ingredients:

- Non-nano zinc oxide, Camellia sinensis (green and white tea) leaf extract, Glycerin, Crambe abyssinica (abyssinian) seed oil, Caprylyl/capryl glucoside (from coconut), Rubus idaeus (red raspberry) seed oil, Punica granatum (pomegranate) seed oil, Brassica oleracea italic (broccoli) seed oil, Tocopherol ( vitamin e), Acetyl glucosamine (from corn), Prunus avium (sweet cherry) seed oil, Silk powder, Pearl powder, Sodium hyaluronate (hyaluronic acid), Beta-glucan, Coffea arabica (coffee) seed extract, Lecithin, Rosmarinus officinalis (rosemary) leaf extract, Xanthan gum, Potassium sorbate, Citrus aurantium amara (neroli) flower oil, Lavandula hybrida (lavender) oil, Phenethyl alcohol, Ethylhexylglycerin, Iron oxides, Mica, Titanium dioxide (for pigment)

❖ Can be found on [www.truebotanicals.com](http://www.truebotanicals.com)



# Cost Comparison

Almay Smart Shade CC Cream: **\$7.00** for 1 oz.



True Botanicals Everyday Sheer Coverage SPF 20: **\$40** for 1 oz.




# Almay CC Cream vs. True Botanicals Sheer Coverage

- ❖ The True Botanicals Sheer Coverage Foundation does not contain any toxic chemicals, making it safer and more environmentally friendly than the Almay one.
- ❖ Most of its ingredients are also extracts from various plants, many of which are non-GMO and organic, making the product even greener and safer to use.
- ❖ Even though it is more costly to go with the True Botanicals option, after learning about the carcinogens in my Almay CC Cream, I will no longer use it. While the True Botanicals choice is costly, it will be worth it, as I can use the product knowing that it is both non-toxic and environmentally friendly.




# My Infographic

## Almay Smart Shade CC Cream

- 
- Price: \$7.00
  - SPF 20
  - Lightweight alternative to a foundation
  - Contains Octinoxate, a carcinogenic chemical

## True Botanicals Everyday Sheer Coverage SPF 20

- 
- Price: \$40.00
  - SPF 20
  - Lightweight alternative to a foundation
  - Contains no toxic chemicals
  - Contains all natural ingredients from various extracts



# Social Media Posts

