

GREENEST

Emma Melis (Individual)

City: Montreal

Username: emma.melis@rogers.com

Province: Quebec

Email: emma.melis@rogers.com

Country: Canada

School: McGill University

Think

What we are observing real time across our planet through climate change, loss of species, natural disasters, human and urban encroachment, destruction of biodiversity ... is hard to handle on a daily basis. But what we can each do to be active global citizens is to make choices that protect our environments and ultimately ensure the health of our planet.

Challenge

So how do we become effective changemakers on our campuses and local communities. We start with observation – paying attention in ways that maybe we haven't in the past.

- **First, walk around your campus and observe – not the kind of walk you do when you are running late for class – slow, intentional, walking. Observe the natural habitats and species, infrastructure, resources, land use, and the commons. What do you see that may potentially be causing harm to you, your campus and the biodiversity of our planet?**
- **Document three observations through photos and caption your pictures with your solutions to these harmful practices.**



Throwing natural leaves into a plastic bag as yard waste.

Why do you mix something biodegradable with something non-biodegradable? It completely undermines the idea of composting yard waste... Making the simple switch to using paper yard waste bags can ensure that leaves and other natural components of compost can go where they belong.



Littering so close to nature when there's a recycling bin a few metres away.

When I see people's litter lying around gorgeous flowers, it makes me sad to see utterly inexcusable pollution so close to home... Increasing awareness about this violation of natural respect and installing more adequately-labelled waste receptacles where needed can decrease the amount of litter.



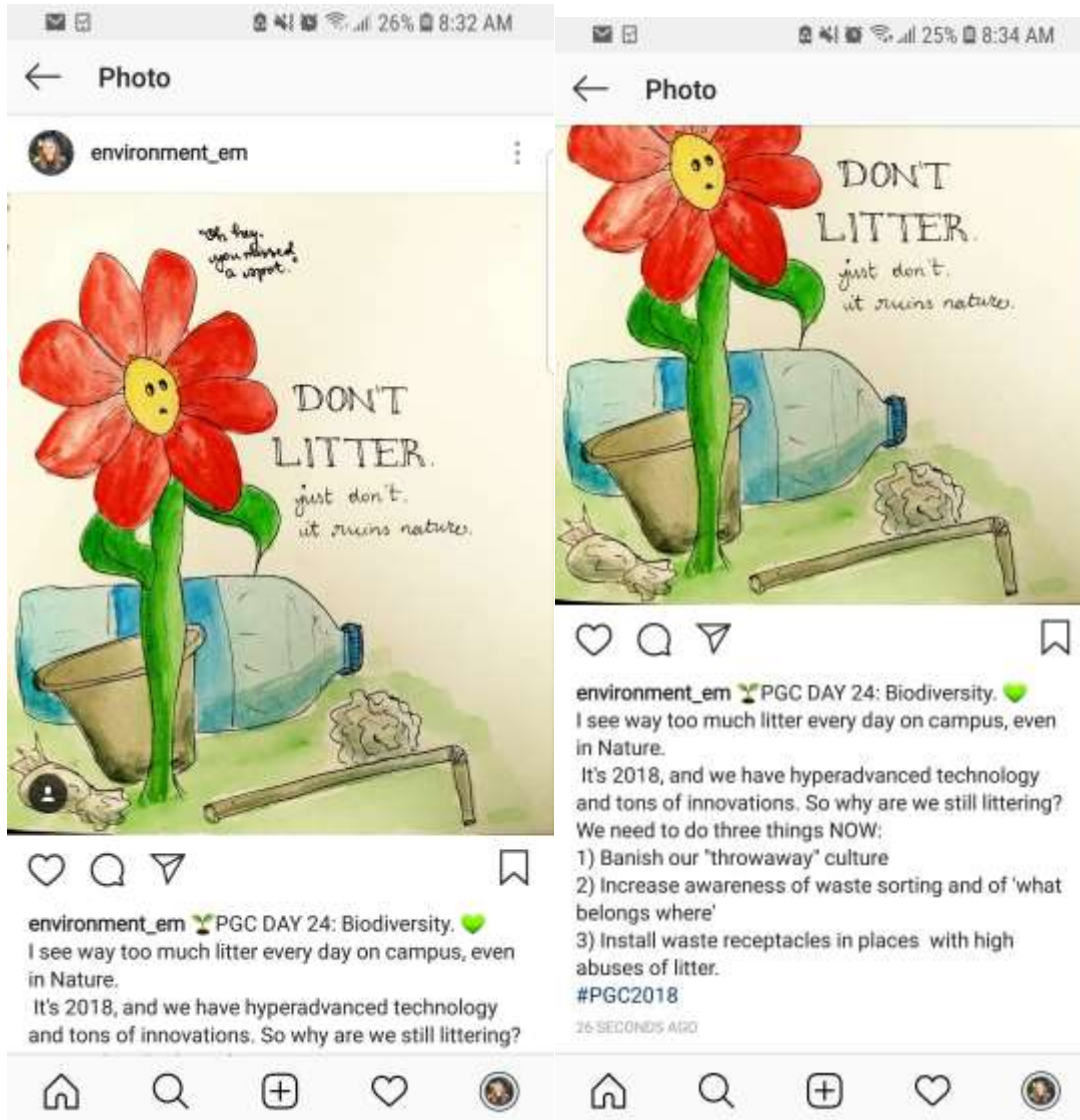
Having almost exclusively grass lawns...

This unsustainable landscaping practice is unhealthy for bees and other pollinators. Pollinator species flourish when there is an abundant variety of different wildflowers and plants, whereas monocultural nonflowering grass lawn is only making Colony Collapse Disorder worse... By allowing native wildflowers to disperse and grow freely, pollination can increase, thus helping pollinator population situations to improve.

- **Pick one of your observations and develop actionable steps you could take to make a difference. Create a visual and compelling call to action that will wake people up across your campus and in your community to help ignite change.**



Share your call to action on social media and tag Tag [@TurningGreenOrg](#), [@annieshomegrown](#), [@ConservationOrg](#), [@RnfrstAlliance](#) and use the hashtag #PGC2018.



SUBMITTED AT: 8:30 am ET 25 October 2018